

United
Way



United Way
of the Laurel Highlands
Serving Cambria & Somerset Counties



Leading CHANGE *In our community*



2021 | ANNUAL REPORT

Get to know our work: UWLaurel.org



WHO WE ARE

The United Way of the Laurel Highlands is a volunteer-driven, community-leading organization, responsible for creating, expanding, and accelerating positive social change in Cambria and Somerset Counties. Our mission is to improve lives by mobilizing the caring power of our community. Together, we build healthy neighborhoods.

WHAT WE DO

The United Way of the Laurel Highlands is strategically focused on funding evidence-based programs and impactful services aimed at three core initiatives:

- Early Childhood Development
- Parental Engagement
- Youth Drug & Alcohol Prevention

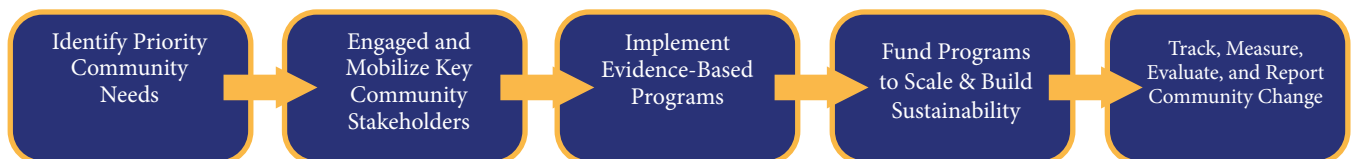
These community needs have been identified by several community-wide needs assessments, which were performed in partnership with Conemaugh Health System and the 1889 Foundation. In addition, we continue to support basic human needs.

HOW WE WORK

The United Way of the Laurel Highlands uses an Enhanced Community Impact Model (ECIM) ®.

Enhanced Community Impact Model ®

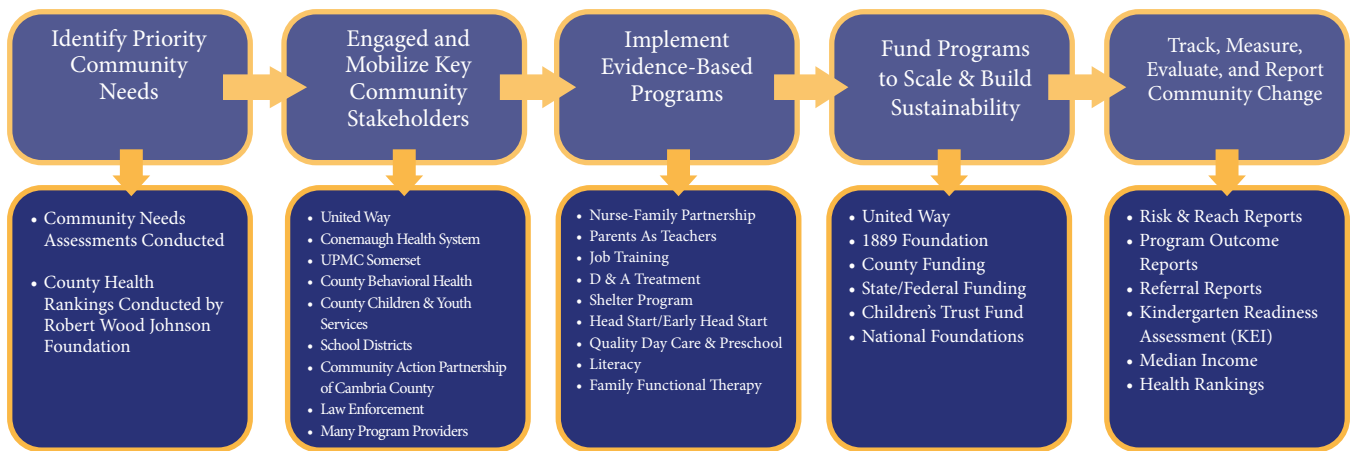
The Enhanced Community Impact Model (ECIM) is the foundation of “how” the United Way of the Laurel Highlands implements, sustains, and creates lasting social change across a two-county service area. This model follows collective-impact strategies focused on building collaborative efforts to address priority community needs. Throughout the process, progress is tracked, measured, evaluated, and reported.



EARLY CHILDHOOD DEVELOPMENT & PARENTAL ENGAGEMENT INITIATIVE

United Way of the Laurel Highlands has been dedicated to developing strategies, opportunities, and collaborations that strengthen our youngest learners. Using a whole-child approach, we seek to make investments that support children’s health, learning, nutrition, economic security and safety. We know that bright futures happen when we empower children and families.

Building a Civic Infrastructure Following the ECIM[®]

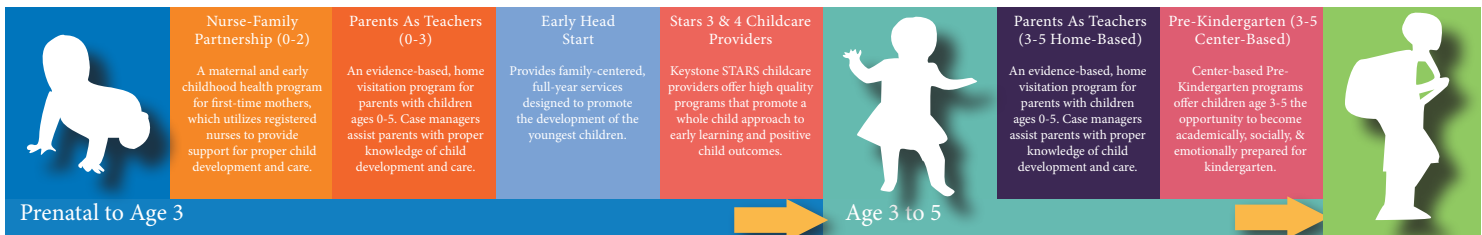


Designing & Implementing a Resource Model - Parental Pathways to Success

The United Way of the Laurel Highlands, in partnership with multiple early learning providers, school districts, and agencies, has built the **Parental Pathway to Success**. This linear model guides parents and their children through specific programs and services available within the community that assist, strengthen, and support healthy family development, promote resiliency, and create sustainable self-sufficiency.

The model accomplishes three main goals:

1. Maintain continued year-to-year support and assistance for at-risk families needing aid via family and personal development.
2. Provide a continuum of care for both parents and their children, leading up to the child entering our school systems.
3. Increase parental knowledge of child development and care, while preparing all children socially, emotionally, and academically for kindergarten.



Implementation, Funding, and Outcomes

Following the Enhanced Community Impact Model[®], the United Way of the Laurel Highlands funds both the **Nurse-Family Partnership** and **Parents as Teachers** programs at sustainable levels in both Cambria and Somerset Counties through annual fundraising, grant procurement, state and federal funding, and continued foundation support. Over the past eight years, the implementation and scaling of these programs have led to the following results in both Cambria and Somerset Counties.



646

Families Served Annually



98%

Up-to-date Immunizations



100%

Referred to Annual Development Screening



98%

Referred Developmental Delays



90%

Transitioned into Early Learning Development Programs

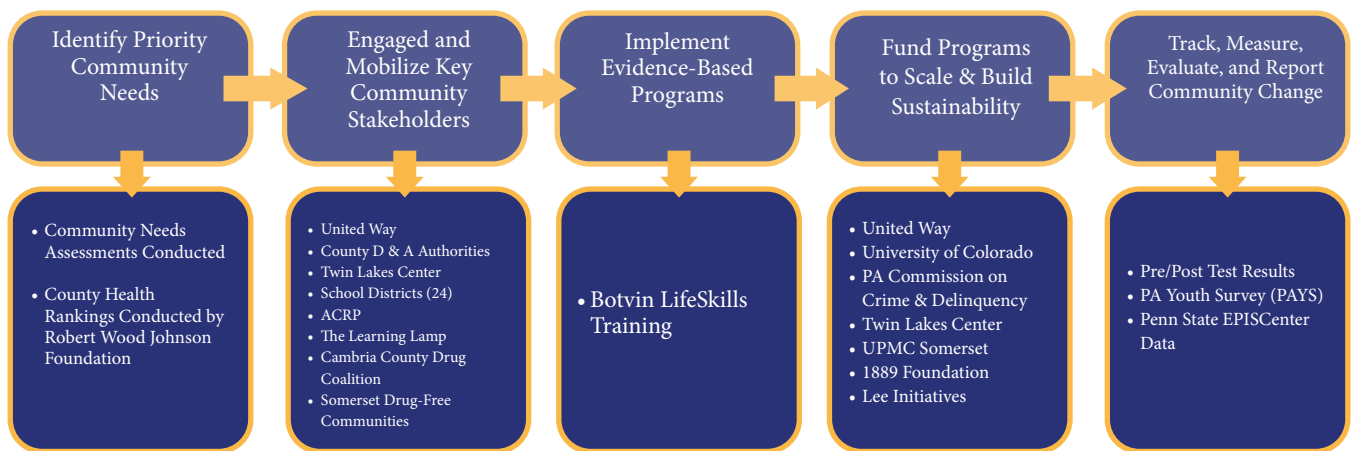
YOUTH DRUG & ALCOHOL PREVENTION INITIATIVE

Youth Drug & Alcohol Prevention

The United Way of the Laurel Highlands is committed to providing youth drug and alcohol prevention programming in all school districts in both Cambria and Somerset Counties. In 2011, the UWLH Board of Directors made the decision to fund the growth and expansion of the nation's top prevention program, Botvin LifeSkills Training, in four predetermined school districts across both Cambria and Somerset, reaching approximately 160 students.

Over the last 11 years, the work of the UWLH, along with many key community stakeholders, including each county's Single County Authority, Twin Lakes Center, Cambria County Drug Coalition, Somerset Drug-Free Communities, the Pennsylvania Commission on Crime and Delinquency, University of Colorado, all 24 school districts, and providers of Youth Drug & Alcohol Prevention programming have made significant a impact within the region. Botvin is now being taught to 6,500 students each year.

Implementing the Enhanced Community Impact Model to Create Social Change



PRESCHOOL & AFTERSCHOOL PROGRAMMING

Preschool & Afterschool Programming

At the United Way, we continue fund high quality preschool and afterschool programming within our community. Investment in these programs help children develop social and emotionally, and contribute to academic success. Through our Partner Agencies, children continue to receive the care they need to learn, grow and thrive.

Preschool Programming - Partner Agencies & Impact

- **The Learning Lamp** - Funded in the amount of \$8,000 in 2021-2022 to provide preschool scholarships to children, The Learning Lamp was able to positively affect the lives of eight deserving preschoolers in Cambria County.
- **Small Town Hope** - Funded in the amount of \$12,000 in 2021-2022 to provide preschool programming to children in the Northern areas of Cambria County, Small Town Hope continues to provide high-quality learning experiences to 20 students.

Afterschool Programming - Partner Agencies & Impact

- **The Learning Lamp** - Funded in the amount of \$10,000 in 2021-2022 to provide their afterschool outreach to students in Cambria County within Greater Johnstown School District, The Learning Lamp was able to provide educationally based, structured programming to 17 students in the Oakhurst and Coopersdale neighborhoods.
- **Boys & Girls Club of Somerset County (BGC)** - Funded in the amount of \$10,000 in 2021-2022 the Boys & Girls Club of Somerset County's "Power Hour" program has become a community asset for advancing student learning in grades K-5. Funding from the UWLH gives BGC the ability to secure volunteers to assist students with one-on-one tutoring.

BASIC HUMAN NEEDS INITIATIVE

Supporting Basic Human Needs

The Cambria and Somerset County region is a wonderful place to live, work, and grow. For individuals and families needing assistance, the community has a vast array of safety net services to assist those who are experiencing difficulties. Our United Way invests in basic human needs by funding the work and programs of our dedicated Partner Agencies. These programs commonly provide the vital resources and assistance that most individuals need to avoid crisis situations.

Through their work, these Partner Agencies enable the United Way to reach and impact the lives of over 50,000 individuals each year. Programs within this initiative area span across the following seven platforms:

FIGHTING HUNGER



SUPPORTING BETTER MENTAL AND PHYSICAL HEALTH



KEEPING THE POWER AND HEAT ON



As the amount of need continues to grow within our community, the United Way of the Laurel Highlands remains strategically invested in the development of collaborative approaches centered on reducing the challenges faced by individuals and families who are most susceptible within the areas shown above. Below we have listed the funded agency, funding level, supported basic human needs, and impact that is being made within the community from the 2021-2022 United Way allocations.



Hunger

The United Way of the Laurel Highlands is the lead administrator of the Pennsylvania Department of Agriculture Grant for Cambria County. During the course of the 2020-2021 grant funding cycle, \$215,905 was allocated to 20 local food pantries and meal centers via the PA Department of Agriculture grant, serving approximately 92,250 individuals requiring food assistance.



Homelessness

Addressing the issue of homelessness in Cambria and Somerset Counties has quickly become a priority area for our United Way. To address this growing need, we invest funding in two separate shelters within our region — \$18,000 to the Martha and Mary House, operated by Catholic Charities in Cambria, and \$11,500 to the Next Step Center in Somerset. Combined, these agencies serve more than 100 individuals annually.



Mental Health

Supporting Mental Health programs is important to sustaining the health and well-being of our community. In doing so, our United Way invested \$15,000 in funding to the Peer Empowerment Network, which annually sees more than 3,000 individuals within Cambria County.



Emergency Utility Assistance

We support the needs of many individuals through funding Emergency Utility Assistance programs in both Cambria and Somerset Counties. In Cambria, Catholic Charities receives \$18,000 annually to provide emergency financial assistance to individuals seeking vital support. In Somerset, \$6,500 is allocated to The Salvation Army — Somerset to provide heating assistance to families.



Medical Assistance

The work of Highlands Health is an important asset for providing much-needed healthcare in Cambria and Somerset Counties. In 2021-2022, Highlands Health received \$32,500 to provide much needed medical assistance to 900 individuals in our two-county region. Highlands Health administered 12,352 COVID-19 vaccines.



Direct Victims of Crime and Domestic Abuse

Addressing direct victims of crime and domestic abuse within our community is a focus at the United Way of the Laurel Highlands. We are very grateful to have two Partner Agencies who continue to make a positive impact each year. Victim Services, Inc. received \$42,000 to provide direct support to individuals escaping domestic violence/abuse situations, and the Women's Help Center received \$5,400 to provide emergency shelter to women and children.

COMMUNITY IMPACT PROCESS

Community Impact - Funding Partner Agency Programs & Services

The impact of the United Way of the Laurel Highlands would not be possible without the hard work and dedication of our 24 Partner Agencies who deliver programs and services to the community. Decisions on appropriate levels of funding allocated to these Partner Agencies is completed through the Community Impact Process. This process is completely driven by volunteers, and ultimately helps to determine what programs will be funded based upon applications they evaluated.

To receive funding from the UWLH, a Partner Agency must go through the Request for Proposal Process. Many partner agencies have long-term relationships with the UWLH, and continue to illustrate their impact to the community based upon an annual assessment, which is done via the Community Impact Process.

Non-UWLH Partner Agencies must respond to a Request for Information (RFI) put forth by the UWLH in order to submit an Request for Proposal (RFP). RFI's are not published annually, and are done so if the need to expand an area of impact is presented.

The Overall Process:

The Community Impact Committee, which is comprised of civic-minded leaders, United Way board members, and United Way volunteers, oversees two Community Impact Panels. These panels are separated based upon two definitions of need within the community aligned with the focus areas of the UWLH:

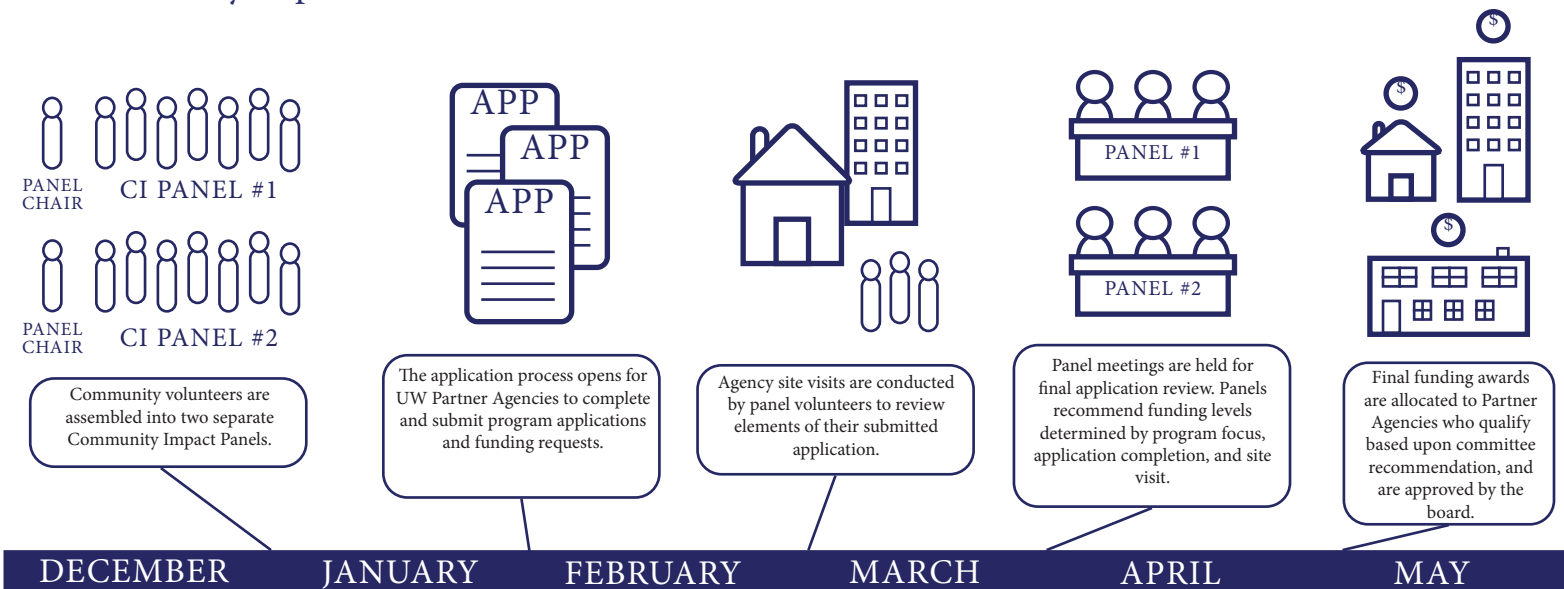
PANEL #1 - Helping Children & Youth Succeed

The HCYS Panel is focused on evaluating Partner Agency programming for our youngest community members. Volunteers who comprise this panel will evaluate programs focused on pre-birth to school-aged youth.

PANEL #2 - Strengthening & Supporting Families, Supporting the Vulnerable & Aging, Promoting Self-Sufficiency, and Promoting Health & Wellness

This Panel is focused on evaluating Partner Agency programs which strengthen families, promote health and wellness, support the vulnerable and aging, or promote self-sufficiency. Volunteers on this panel also review programs focused on basic human needs within our community.

Community Impact Process & Timeline



GRANT WRITING

Grant Writing Initiative

Beginning in 2016, the United Way's Grant Writing Initiative was developed to support grant procurement for both United Way initiatives and community-based collaborations. During the last 6 years, Travis Hutzell, the United Way's Grant and Resource Development Director, has helped secure more than \$9,140,449 in grant funding, which has largely benefited vital community-based efforts in both Cambria and Somerset Counties. The following table illustrates the progress that has been made throughout the course of the 2021-2022 grant writing cycle. *(Note: Does not reflect outstanding grant applications that may be awarded by the end of the fiscal year.)*

Grant Received	Grant Recipient	Annual Award Amount	County Supported	Duration
Plans of Safe Care-Cambria County-ECD/PE	Cambria County Children & Youth Services	\$80,000	Cambria	2 Year
Plans of Safe Care-Somerset County-ECD/PE	Somerset County Children & Youth Services	\$60,000	Somerset	2 Year
Lee Initiatives-YDAP	Twin Lakes Center	\$10,000	Somerset	1 Year
DDAP-Maternal Addiction Services	Maternal Addiction Resource Center (MARC)	\$600,000	Cambria/Somerset	18 Months
Murtha Fellows Foundation	Flood City Youth Academy	\$1,500	Cambria	1 year
Community Foundation for the Alleghenies	Flood City Youth Academy	\$6,500	Cambria	1 year
Community Foundation for the Alleghenies	Nanty Glo Historical Society	\$5,000	Cambria	3 Year
Community Foundation for the Alleghenies	UWLH	\$4,350	Somerset	1 Year
Mentoring and Tutoring	Flood City Youth Academy	\$273, 872	Cambria	1 Year
PCCD-Gun Violence Prevention	Hope 4 Johnstown	\$224, 998	Cambria	3 Year
PHARE-Housing	Next Step Center, Inc.	\$355,000	Somerset	1 Year
UWP COVID19 LIVE Grant-Community Vaccination Grants	UWLH	\$20,440	Cambria/Somerset	1 Year
PCCD Under 10K JAG-Drone Grant	Somerset Borough Police Department	\$35,397	Somerset	1 Year
Community Foundation for the Alleghenies - Afterschool Program - FCYFA	Flood City Youth Academy	\$5,000	Cambria	1 Year
Community Foundation for the Alleghenies - Community Development-WAEDC	Windber Area Economic Development Council	\$2,000	Somerset	1 Year
Lee Initiatives-ECD/PE-Diaper Bank Program	UWLH	\$15,000	Cambria/Somerset	1 Year
Community Foundation for the Alleghenies-ECD/PE-Diaper Bank Program	UWLH	\$4,000	Cambria/Somerset	1 Year

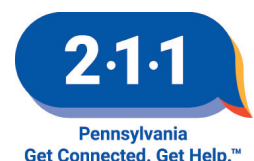
\$1,703,057

PA 211

PA 211 Helpline

PA 211 is non-emergency helpline dedicated to connecting individuals who are in need of health and human services with local information and resources that can help assist them during their time of need. PA 211 is available to all residents in Cambria and Somerset Counties free of charge, and is available 24/7, 365 days a year. Annually, PA 211 receives more than 1,500 calls from Cambria and Somerset County residents seeking help for health and human services related to:

- Utility Assistance
- Rent Assistance
- Medical Assistance
- Drug & Alcohol Support or Treatment
- Mortgage Assistance
- Employment Assistance
- Transportation Assistance
- Food Assistance



REVENUE & EXPENSES

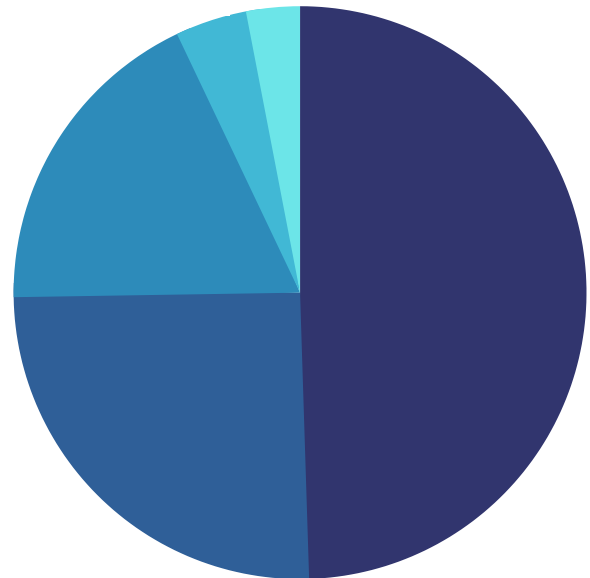
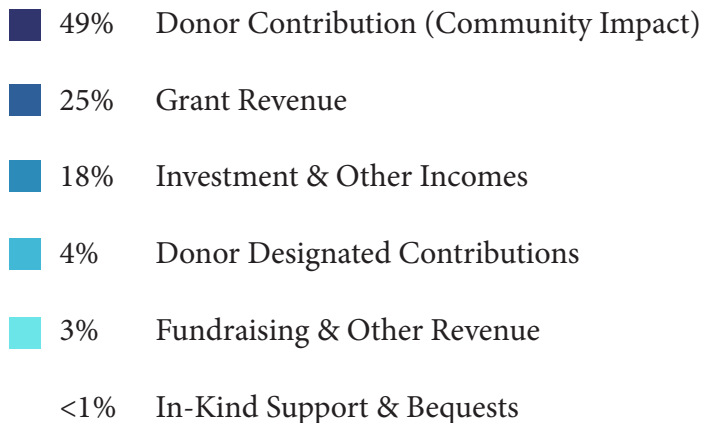
Top ratings for efficiency
and transparency



Revenue & Expenses - 2020-2021 Fiscal Year

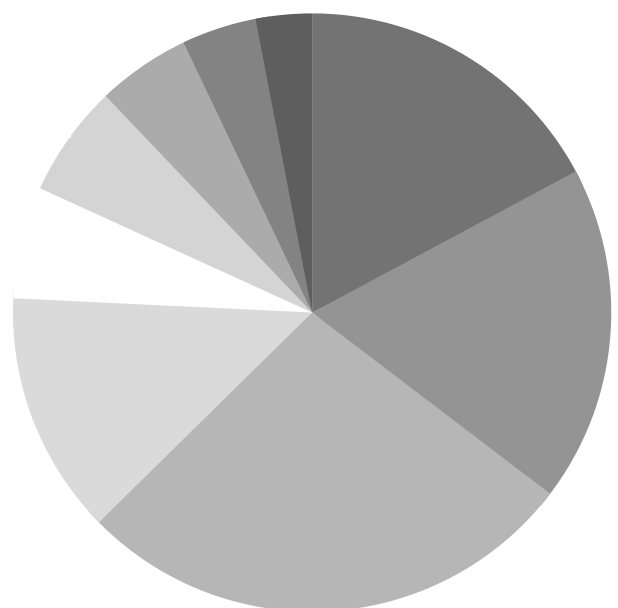
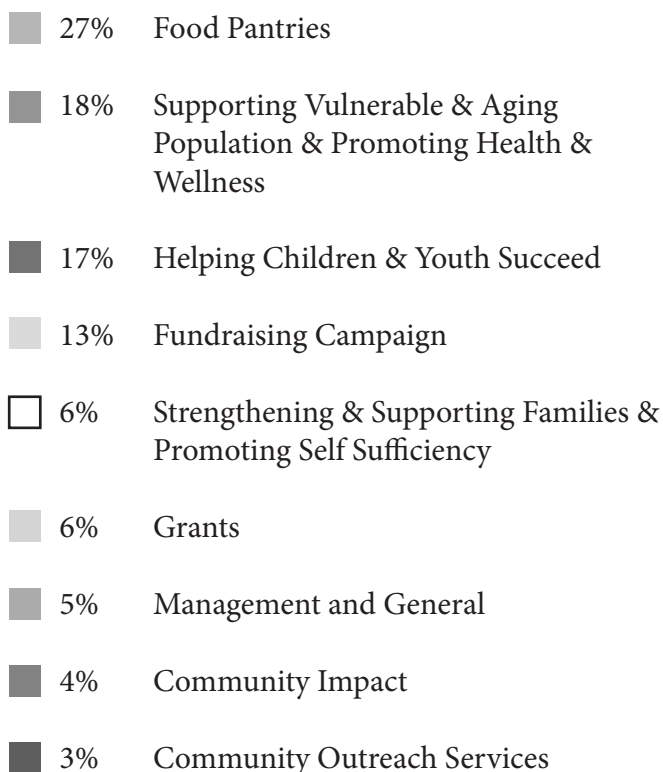
United Way adheres to best practices in non-profit management, applying consistent, effective, internal controls and strong governance to ensure accountability and transparency. Revenue and expense information reflects audited totals from the Fiscal Year - July 1, 2020 to June 30, 2021.

Revenues:



\$1,931,383

Expenses:



\$1,578,235

2021-2022 COMMUNITY IMPACT INVESTMENT

Emergency Food and Shelter Program

Comprised of local organizations as mandated by Congress, the United Way of the Laurel Highlands Food and Shelter Committee distributes funds from the Emergency Food and Shelter/FEMA grants and the Pennsylvania Department of Agriculture. The United Way of the Laurel Highlands is proud to be the administrator of this grant for Cambria County.

Agency	2021-2022 Funding
Windber Area Community Kitchen	\$573
Food for Families Food Bank	\$4,013
Catholic Charities	\$37,264
Victim Services, Inc.	\$5,733
Community Action Partnership	\$8,599
Total	\$56,182

PA Department of Agriculture Grant Funding Distribution - 2021-2022

Food Pantries	2021-2022 Funding
St. Bernard Food Pantry	\$17,010
Cresson Food Pantry	\$6,796
Dorothy Day Center	\$7,046
Ebensburg SVDP Food Pantry	\$11,872
Forest Hills Emergency Food Pantry	\$5,486
Franklin Street United Methodist Church Pantry	\$15,254
Good Samaritan Food Pantry	\$9,436
Gr. Johnstown Christian Fellowship Pantry	\$8,856
Interfaith Food Pantry	\$24,060
Moxham Food Pantry	\$11,436
Patton Food Pantry	\$18,610
Portage Area Food Pantry	\$10,672
South Fork Food Pantry	\$6,450
St. Andrew's Food Pantry	\$3,294
St. Clement's Food Pantry	\$7,070
Walnut Grove Emergency Food Bank	\$6,310
West End Food Pantry	\$13,534
Served Meals	
Family Kitchen	\$15,010
Salvation Army	\$5,784
Equipment Grant	\$11,920
Total	\$215,906

2022-2023 COMMUNITY IMPACT INVESTMENTS

Community Impact Investments

Community Impact Investments are the funds that each agency receives based upon the work of the Community Impact Committee. Allocation amounts are determined based upon agency site visits conducted in March, followed by volunteer evaluations of the programs in April. The table below illustrates how funding raised through the prior campaign, as well as grant procurement, makes an impact within the communities of both Cambria and Somerset Counties.

Program Investment	Program Delivered by	Investment
Parents As Teachers	Beginnings, Inc.	\$180,000
Grant Writing Initiatives	United Way of the Laurel Highlands	\$74,559
Community Impact Initiatives	United Way of the Laurel Highlands	\$68,530
Community Outreach Services	United Way of the Laurel Highlands	\$61,414
Nurse-Family Partnership	Home Nursing Agency	\$50,000
Direct Services to Victims of Violent Crimes	Victim Services	\$42,000
Youth Drug & Alcohol Prevention	Cambria County Drug Coalition	\$40,000
Parents As Teachers	Family Center	\$34,000
Free Medical Clinic	Highlands Health	\$32,500
Preschool Programming	Small Town Hope	\$24,000
Flood City Youth Academy	Youth Tutoring	\$20,000
Emergency Food & Shelter	United Way of the Laurel Highlands	\$21,897
PA 2-1-1	211 Southwest PA	\$15,225
Drop-In Center	Peer Empowerment Network	\$15,000
Homeless Shelter - Cambria	Catholic Charities	\$15,000
Emergency Financial Assistance	Catholic Charities	\$14,000
Girl Scouts Urban Setting	Girl Scouts	\$10,000
Homeless Shelter - Somerset	Next Step Center	\$10,000
Power Hour	Boys & Girls Clubs	\$10,000
Preschool Tuition Assistance	The Learning Lamp	\$8,000
Children's Vision Screening Program	Somerset County Blind Association	\$7,500
Community Help Center	Women's Help Center	\$4,265
Heating Assistance	Salvation Army Somerset Service Center	\$3,500
Sustainable Produce Program	Somerset County Mobile Food Bank	\$3,000
Youth Drug & Alcohol Prevention	Twin Lakes Center	*210*
Donor Designated Pledges		**23,635 **
Funding supplemented by the Somerset Single County Authority for Drug and Alcohol ** Includes ACRP and Boy Scouts of the Laurel Highlands Council, YMCA, YWCA **		
Total Community Impact Investment	Partner Agency Allocations	\$788,235
Grant Writing Investment	Funding Secured for Community Programs/Projects	\$1,703,057
UWLH Diaper Bank	In-Kind and Monetary Donations	\$1,263
TOTAL COMMUNITY INVESTMENT		\$2,492,555



The signature event returns

Women United of the Laurel Highlands was able to hold the group's signature event, Power of the Purse in October, after COVID forced the cancellation of the 2020 event.

The results surpassed expectations, as \$45,000 was raised to fund our early childhood development and parental engagement programs. The approximate 600 women in attendance were asked to bring a package of diapers to help stock our newly formed diaper bank. The result was a spectacular contribution that helped to bring in 22,000 diapers, stocking a distribution point for every school district in Cambria and Somerset Counties.

The next Power of the Purse is scheduled for Sept. 8, 2022, at the 1st Summit Arena @ Cambria County War Memorial.

POWER
of the
Purse

DIAPER BANK

The creation of this new program is serving families in Cambria and Somerset Counties. Late in 2021, we collected 23,000 diapers through partnerships with local businesses, service clubs and community events. Volunteers offered about 60 hours to repackage the diapers into parcels of 25. On average, about 1 in 3 families falls short of about 25 diapers each month. Distributions started in February. To date, we have delivered 5,900 diapers to families.



United Way
of the Laurel Highlands
Serving Cambria & Somerset Counties

OPERATION Diaper *Delivery*

Distribution points are located by school district in each county

CAMBRIA COUNTY DIAPER BANK LOCATIONS *ALL BANKS ARE OPEN 9 a.m. to 2 p.m.
the last Tuesday of each month for supplemental pickup.*

Blacklick Valley SD
Cambria County Child
Development Corp.
300 Prave Street, Suite 101
Ebensburg, PA 15931

Cambria Heights SD
Small Town Hope
2214 Bigler Ave.
N. Cambria, PA 15714

Central Cambria SD
Cambria County Child
Development Corp.
300 Prave Street, Suite 101
Ebensburg, PA 15931

Conemaugh Valley SD
Beginnings
111 Market St.
Johnstown, PA 15901

Ferndale SD
Goodwill Southern Alleghenies
Moxham Food Pantry Location
540 Central Ave.
Johnstown PA 15902

Forest Hills SD
The Learning Lamp
2025 Bedford Street
Johnstown, PA 15904

Glendale SD
Small Town Hope
2214 Bigler Ave.
N. Cambria, PA 15714

Greater Johnstown SD
15901 / 15905 / 15906
Beginnings, Inc.
111 Market St.,
Johnstown PA 15901
15902 / 15904 / 15905
Goodwill Southern
Alleghenies, Moxham
Food Pantry Location
540 Central Ave.,
Johnstown PA 15902

Northern Cambria SD
Small Town Hope
2214 Bigler Ave.
N. Cambria, PA 15714

Penn Cambria SD
Cambria County Child
Development Corp.
300 Prave Street, Suite 101
Ebensburg, PA 15931

Portage SD
The Learning Lamp
2025 Bedford Street
Johnstown, PA 15904

Richland SD
The Learning Lamp
2025 Bedford Street
Johnstown, PA 15904

**SOMERSET COUNTY DIAPER
BANK LOCATIONS**

*ALL BANKS ARE OPEN 9 a.m. to 2 p.m.
the last Tuesday of each month.*

Westmont SD
Goodwill Southern Alleghenies
Moxham Food Pantry Location
540 Central Ave.
Johnstown PA 15902

Berlin, Confluence,
Meyersdale, Salisbury
& Turkeyfoot SD
Family Center
Salisbury Office
192 Smith Street
Salisbury, PA 15558

Conemaugh Township,
North Star & Somerset SD
Tableland
535 E. Main St., Ste. 1
Somerset, PA 15501

Shade Central City,
Shanksville & Windber SD
Family Center
Central City Office
314 Central Ave.
Central City, PA 15926

EMERGENCY BANKS: Salvation Army Somerset Service Center is the Emergency Diaper Bank for Somerset County: 334 W. Main St., Somerset, PA 15501 - Open 9 a.m. to 3 p.m. Mon. to Fri.; YWCA is the Emergency Diaper Bank for Cambria County: 526 Somerset St., Johnstown, PA 15901 - Open 9a.m. to 4 p.m. Mon. to Fri.

THE WORK OF WOMEN UNITED

Women United - Women's Affinity Group

The Women United® of the United Way of the Laurel Highlands, formerly known as the “Women’s Leadership Council,” has made great strides since the group’s rebranding in the Spring of 2017. The group, which was designed by the United Way Worldwide, is meant to showcase and display women’s empowerment within the communities they live and work. Since 2017, Women United continues to grow in membership, and is comprised of local female executives, business owners, employees, and community advocates.

Women United® supports the core initiative areas of early childhood development and parental engagement. Their core mission is to help educate, engage, and empower families to excel. The women’s affinity group promotes community leadership, interaction, communication, and provides fundraising support for the programs and services aligned with our goals.

The Power of the Purse event, hosted by the Women United®, is the United Way’s top fundraising event. It has become a highly sought after event within the community. In just three short years, the event has grown significantly to host 600 people in attendance. The Power of the Purse event has raised more than \$120,000 in support of the United Way’s top two core initiative areas.



Women United® is a global network of more than 70,000 women in 165 communities across the U.S. and six countries, all dedicated to improving lives and creating stronger communities. Since its inception in 2002, Women United® has raised more than \$1.5 billion to drive real and lasting change. The contributions of these women leaders go well beyond financial donations: they get involved, shake things up, and make a measurable difference in their own backyard and around the world.

1889 FOUNDATION INVESTMENT



The United Way of the Laurel Highlands is especially appreciative for a strong partnership with the 1889 Foundation. In 2021, the 1889 Foundation provided \$505,078 to advance UWLH’s social change initiatives in Cambria and Somerset Counties. These funds were invested across Partner Agencies’ programs to scale innovative approaches to solving some of the most challenging problems.

Together, we collaborate to improve community health, enhance food security, advance early learning initiatives, and create sustainable strategies for the well-being of our region.

As a regional leader, the 1889 Foundation’s spirit of giving helped UWLH improve the well-being of more than 58,000 residents this past year.

BOARD OF DIRECTORS

Board Chair - **Jeffrey Wood**, *General Manager* - Kongsberg Protech Systems

Assistant Board Chair - **Dr. Jerry Zahorchak**, *Division Chair of Education* - University of Pittsburgh at Johnstown

Board Members: (in alphabetical descending order)

John Augustine

Administrative Director
Greater Johnstown Career &
Technology Center

Karen Azer

Community Advocate

Deb Barron

Vice President
NFP Corporation

Alan Cashaw

President
NAACP

Zachary Craig

Senior Vice President, Market Executive -
F.N.B. Wealth Management

Rev. Matthew Deal

Pastor
St. Paul's Church of Christ, Somerset

Becky Flyte

General Manager
The Daily American

Kim George

Staff Representative
AFSCME Council 83

Jim Huerth

President
AmeriServ Trust & Financial Services

Natalie Kurchak

Sales Manager
WTAJ-TV

Brian Law

President
Prime Design Solutions

Sue Mann

President
1889 Foundation

Karen Mento, Treasurer

Senior Vice President and Chief
Administrative Officer
1st Summit Bank

Melissa Musarra

Director of Human Resources
Utz Quality Foods/Snyder of Berlin

Kim Oleksa

Development & Fundraising Coordinator
Chan Soon-Shiong Medical Ctr. at Windber

Karen Remick

Administrative Director
Somerset County Technology Center

Andy Rush

President
UPMC Somerset

Tracy Selak

Administrator
Cambria County Behavioral Health/
Intellectual Disabilities/Early Intervention
Program

Pam Tokar-Ickes, Past Chair

Commissioner
Somerset County

Tim Walters

Sr. Vice President
AmeriServ Trust & Financial Services

STAFF & OFFICE INFORMATION

Karen Struble Myers

President & CEO

Travis Hutzell

Director of Grant & Resource Development

Paula Gojmerac

Community Impact Manager & Officer Manager

Mickie Cooper

Accountant

Rick Kazmer

Community Relationship & Marketing Manager

Main Office:

422 Main Street, Suite 203
Johnstown, PA 15901
(814) 535-2563

Email: Admin@uwlaurel.org

Somerset Office:

218 N. Kimberly Avenue, Suite 204
Somerset, PA 15501

ENDOWMENT & PLANNED GIVING

The United Way of the Laurel Highlands' Endowment and Planned Giving fund is a vessel for individuals determined to making lasting impact on the communities of Cambria and Somerset Counties. The fund has been built on a variety of gifts from long-time supporters of the United Way.

\$892,168



MESSAGE FROM LEADERSHIP



Jeffrey Wood
Board Chairman



Karen Struble Myers
President & CEO

While the pandemic hasn't released its grip on the Laurel Highlands just yet, our experience last year taught us the power of resiliency. With renewed energy and a refreshed strategic plan, United Way of the Laurel Highlands is developing creative solutions to support families, early childhood development, and youth drug and alcohol prevention. Through our commitment to basic health and human services, we seek to improve health and quality of life across our region.

We're growing. Specifically, corn, green beans, and potatoes through a Sustainable Produce Program led by one of our newest Partner Agencies, Somerset County Mobile Food Bank. The produce raised increases food security and access to fresh, local food.

We're learning. Partnerships that demonstrate a strong commitment to equity and inclusivity are actively sought. We collaborate with our Partner Agencies to engage individuals who are marginalized in order to eliminate barriers and address complex issues.

We're changing ... diapers. In the fall of 2021, we collected more than 23,000 diapers to start a regional Diaper Bank ranging from Southern Somerset County to Northern Cambria County. Since our first distribution in February of 2022, more than 5,900 diapers have been provided to area families. Through this community report, we're sharing the many ways we are making a difference together. We're forever grateful to our compassionate donors who Live United in supporting 24 Partner Agencies. Thanks to you, more than 58,000 residents of Cambria and Somerset County were served last year. United Way of the Laurel Highlands has been an anchor in the community for more than 90 years. Beginning in 1930 as a Community Chest, 14 area citizens wanted to improve the well-being of their fellows, to strengthen the spirit of human helpfulness, to endeavor to eliminate and prevent disease, pauperism, delinquency and other social disorders; and to finance the maintenance of civic, charitable, humane, benevolent and philanthropic organizations of the community.

What started as a small group is now a movement. To live better, we must Live United. The future is bright as we boldly pioneer more ways to build healthier lives for our community. We hope you'll join us on this life-changing journey.

Thank you for your generous, heartfelt support of the United Way of the Laurel Highlands.

In gratitude,

Jeffrey Wood
Board Chairman

Karen Struble Myers, CFRE
President & CEO