



# UNITED WAY of the Southern Alleghenies

## 2025 Annual Report



# We Are Better Together

The United Way of the Southern Alleghenies provides a forum for positive community discussions centered on improving lives in Blair, Cambria, and Somerset Counties. Since 1930 we have been leveraging volunteers, ideas, expertise, and generous donations to fund, implement, and sustain programs that support healthy families. Together, we create lasting change.



## What We Do

The United Way of the Southern Alleghenies is strategically focused on funding evidence-based programs and impactful services aimed at three core initiatives:

- Early Childhood Development
- Parental Engagement
- Youth Drug & Alcohol Prevention

Our process finds, and provides funding for, an optimal group of programs that address our core initiatives, as well as other basic human needs. A growing roster of direct programming is helping to fill service voids where other options are not available.

We work with multiple organizations throughout our service area to help implement periodic health needs assessments. Those results, and other data, help to guide our work.

United Way represents a unique place where like-minded community members can convene to create lasting change.

## Stability amid uncertainty

This past year many households have experienced unexpected challenges. Rising costs for groceries, utilities, housing, and fuel have resulted in more people seeking assistance for the first time.

Nearly 18.3% of the region United Way serves uses the Supplemental Nutrition Assistance Program (SNAP) to maintain food security. When threats to Pennsylvania SNAP benefits emerged, United Way was able to mobilize community partners to raise an additional \$27,500 to support food banks and emergency food boxes for families in need. We especially appreciate the willingness of CPV Rogue's Wind, owned by Competitive Power Ventures, and The Polacek Family Partnership Fund at the Community Foundation for the Alleghenies, for providing matching gifts.

While the challenges facing our communities may look different today, United Way is no stranger to difficult times. The organization was founded during the Great Depression, a period when families relied on one another to survive hardship and uncertainty. That same spirit continues to guide the work today. United Way's greatest strength has always been the ability to rally people around a common cause and bring communities together to care for one another.

For generations, it has been neighbors helping neighbors – individuals, businesses, faith-based communities, nonprofits, and volunteers coming together to ensure no family has to face hardship alone. In times of crisis, our community consistently demonstrates resilience, compassion, and generosity. Whether responding to food insecurity, supporting working families, or connecting residents with essential resources, United Way remains committed to strengthening the safety net for those who need it most.

As economic pressures continue to impact local households, we know the need will remain great. But we also know the power of a community united in service and support. Together, we can continue building a stronger, more compassionate region where every family has the opportunity to thrive. United is the way.



# HOW WE WORK

The United Way of the Southern Alleghenies uses an Enhanced Community Impact Model (ECIM)©

## Enhanced Community Impact Model

The Enhanced Community Impact Model (ECIM) is the foundation of “how” the United Way implements, sustains, and creates lasting social change across a three-county service area. This model follows collective-impact strategies focused on building collaborative efforts to address priority community needs. Throughout the process, progress is tracked, measured, evaluated, and reported.



## Community Impact Process



## Funding Partner Agency Programs & Services

The impact of the United Way of the Southern Alleghenies would not be possible without the hard work and dedication of our 26 Partner Agencies that deliver programs and services to the community. Decisions on appropriate levels of funding allocated to these Partner Agencies is completed through the Community Impact Process. This process is completely driven by volunteers, and ultimately helps to determine what programs will be funded based upon the applications they evaluated.

To receive funding from the UWSA, a Partner Agency must go through the Request for Proposal Process. Many partner agencies have long-term relationships with UWSA, and continue to illustrate their impact to the community based upon an annual assessment, which is done via the Community Impact Process.

Non-UWSA Partner Agencies must respond to a Request for Information (RFI) put forth by the UWSA in order to submit a Request for Proposal (RFP). RFI's are not published annually, and are done so if the need to expand an area of impact is presented.

The Community Impact Committee, which is comprised of civic-minded leaders, United Way board members, and United Way volunteers, oversees the Community Impact Panels.



## Community Impact Process Continued ...

### PANEL #1 - Helping Children & Youth Succeed

Focused on evaluating Partner Agency programming in Blair, Cambria, and Somerset Counties for our youngest community members. Volunteers who comprise this panel will evaluate programs focused on pre-birth to school-age youth.

### PANEL #2 - Strengthening & Supporting Families, Supporting the Vulnerable & Aging, Promoting Self-Sufficiency

Focused on evaluating Partner Agency programs in Blair, Cambria, and Somerset Counties, which strengthen families, support the vulnerable and aging, or promote self-sufficiency. Volunteers on this panel also review programs focused on basic human needs within our community.

### PANEL #3 - Promoting Health & Wellness

Focused on evaluating Partner Agency programs in Blair, Cambria, and Somerset Counties, which promote health & wellness for individuals and families in our community.

## Community Impact Process & Timeline



Community volunteers are assembled into three separate Community Impact Panels.

The application process opens for UW Partner Agencies to complete and submit program applications and funding requests.

Agency reviews are conducted by panel volunteers to review elements of their submitted application.

The Community Impact Committee recommends funding levels determined by program focus, application completion, and site visit.

Final funding awards are allocated to Partner Agencies who qualify based upon committee recommendation, and are approved by the board.

DECEMBER

JANUARY

FEBRUARY

MARCH

APRIL

MAY

# EARLY CHILDHOOD DEVELOPMENT & PARENTAL ENGAGEMENT INITIATIVE

## Building a Civic Infrastructure for Early Childhood

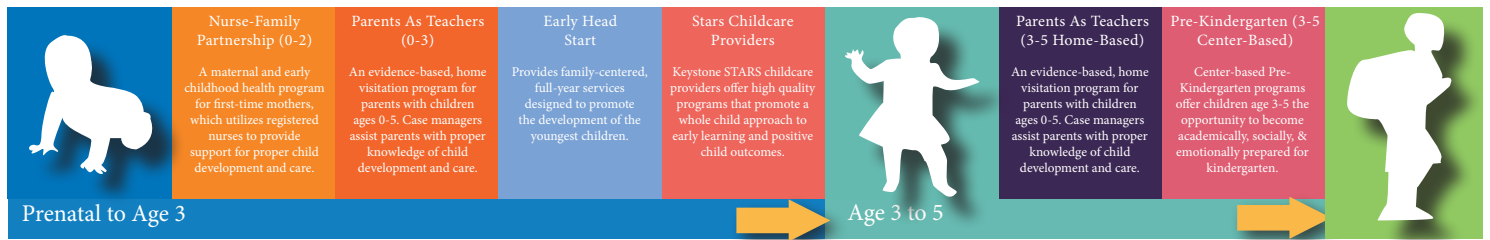
United Way of the Southern Alleghenies has been dedicated to developing strategies, opportunities, and collaborations that strengthen our youngest learners. Using a whole-child approach, we seek to make investments that support children’s health, learning, nutrition, economic security, and safety. We know that bright futures happen when we empower children and families.

## Designing & Implementing a Resource Model - Parental Pathways to Success

The United Way of the Southern Alleghenies, in partnership with multiple early learning providers, school districts, and agencies, has built the **Parental Pathway to Success**. This linear model guides parents and their children through specific programs and services available within the community that assist, strengthen, and support healthy family development, promote resiliency, and create sustainable self-sufficiency.

The model accomplishes three main goals:


- Maintain continued year-to-year support and assistance for at-risk families needing aid via family and personal development.
- Provide a continuum of care for both parents and their children, leading up to the child entering our school systems.
- Increase parental knowledge of child development and care, while preparing all children socially, emotionally, and academically for kindergarten.



## Implementation, Funding, and Outcomes

Following the Enhanced Community Impact Model®, the United Way of the Southern Alleghenies funds both the **Nurse-Family Partnership** and **Parents as Teachers** programs at sustainable levels in Blair, Cambria, and Somerset Counties through annual fundraising, grant procurement, state and federal funding, and continued foundation support. The implementation and scaling of these programs has led to the following results in Blair, Cambria, and Somerset Counties.

  
719  
Families Served Annually

  
98%  
Up-to-date Immunizations

  
100%  
Referred to Annual Developmental Screening

  
100%  
Referred Developmental Delays

# EARLY CHILDHOOD DEVELOPMENT, PARENTAL ENGAGEMENT & EARLY CHILDHOOD INITIATIVE



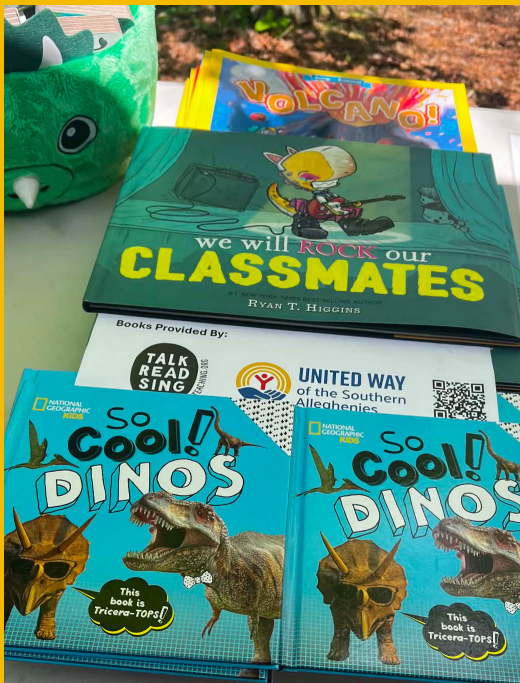
Lauren Lazzari

## Building brighter futures through books

By LAUREN LAZZARI  
Early Childhood Systems Coordinator

During the 2025-2026 school year, our Early Childhood Initiative distributed more than 8,000 books through our highly successful Kids Career Fairs, library storytimes, community tabling events at our Diaper Banks, and additional outreach efforts throughout Cambria and Somerset Counties. This brings our annual total to more than 15,000 books distributed to children and families across our region.

We are also proud to announce that we are now an official Talking is Teaching campaign through Too Small to Fail, further strengthening our commitment to early literacy, positive parent-child interaction, and kindergarten readiness.



## Preschool & After School Programming

At the United Way, we continue to fund high quality preschool and afterschool programming within our community. Investment in these programs helps children to develop socially and emotionally, and contributes to academic success. Through our Partner Agencies, children continue to receive the care they need to learn, grow, and thrive.

### Preschool Programming - Partner Agencies & Impact

- The Learning Lamp – Early Childhood Behavioral Intervention & Support Program was funded at \$30,000 in 2025-26. This program incorporates the expertise of three Master's level Early Childhood Mental Health Consultants who provide both individual child and classroom observations, develop recommendations for improvements, and coach staff and parents through implementation.
- Small Town Hope – Funded in the amount of \$26,000 in 2025-26 to provide preschool programming to children in the northern areas of Cambria County, Small Town Hope continues to provide high-quality learning experiences to 20 students.

### Afterschool Programming - Partner Agencies & Impact

- Flood City Youth Academy – Funded in the amount of \$20,000 in 2025-26 to provide an afterschool tutoring and mentoring program to, on average, 175 students each weekday. Each student also receives a meal.
- Gloria Gates Foundation – Funded in the amount of \$9,000 in 2025-26 to provide afterschool programs to youth in Blair County.
- Big Brothers Big Sisters – Funded in the amount of \$5,500 in 2024-25 for two programs, which provides youth mentoring in Blair County.

## Other projects

### Diaper Bank

On average, about 1 in 2 families fall short by about 25 diapers each month, creating a barrier for parents to get their children into day care and preschool. This, in turn, creates a barrier to going to work. Our growing diaper bank network was developed to meet that emerging need. The network of distribution points throughout Cambria/Somerset Counties provides more than 14,000 diapers a month to families. Diapers are also being distributed to families receiving programming via UWSA's Blair County Family Resource Center. In 2025, 174,200 diapers have been distributed throughout UWSA's service area.

### Toasty Toddler (Blair County)

710 children ages birth to age 5 received new winter wear.

### Stuff the Bus (Blair County)

450 students in grades K-12 received new school supplies and backpacks.

# FAMILY RESOURCE CENTER OF BLAIR COUNTY



Sponsoring the Family Resource Center of Blair County is one of the ways that United Way is making a positive impact on early childhood education and parental engagement. The Family Resource Center is one of 28 state-funded Family Centers in Pennsylvania. Family Centers increase parent involvement and knowledge, a child's success in school, school readiness, and the health and welfare of families. Family Centers help to prevent child abuse and neglect and save the Commonwealth money in terms of reduced crime, increased labor market benefits, and health care savings.

FRC offers many cost-free programs including:

- Parents as Teachers, an evidence-based home visiting program for families with children prenatal to Kindergarten entry. The center is a Blue Ribbon Affiliate of the international Parents as Teachers, making it one of the top performing early education and home visiting affiliates within the network.
- Be Strong Parent Cafés, family-based and parent-led program designed by Be Strong Families to facilitate peer-to-peer learning around five evidence-based protective factors that improve resilience and strengthen supports in families
- Make Parenting A Pleasure, evidence-informed parenting classes for any parent in Blair County wishing to learn more about parenting.
- Families in Recovery, pilot parenting class program that works with families experiencing addiction and recovery.
- Community Outreach Programs, including Stuff the Bus, Toasty Toddler, and Week of the Young Child Celebration.

Service numbers: Toasty Toddler: 710 children ages birth through 5 received new winter wear; Stuff the Bus: 458 students in grades K-12 received new school supplies and backpacks; Week of the Young Child Celebration: 401 parents and children and 87 volunteers attended.

Volunteer opportunities: The Family Resource Center has a variety of volunteer opportunities that allow community members to share their time and talents for the benefit of families in our community.

## More about the FRC team

The center currently employs a director, Denise Adams, who has been a part of the Family Resource Center since 2003 as an AmeriCorps Member, employed full time in 2004 as a parent educator in the Parents as Teachers Program, (later employed as the Local Education and Resource Network coordinator for the United Way) and finally as director in 2013. The center also employs three full-time family development specialists or parent educators. Imola Wible has been employed since 2004, beginning as a parent educator in our PAT Program; she has a strong passion for literacy and family well-being. Julie Colabove has been employed since 2008, and Jonnie Frederick has been employed since 2023 – both have a strong history in parent education, early education, and child care. Each of them fulfill their roles in homes with skill and heart, visiting more than 60 families each year bi-weekly. During visits and group social connections, they share early development information and hands-on activities, knowledge about parenting, and inspire parents to increase family well-being through setting goals and providing resources.



**Denise Adams (center) and the FRC team, Julie Colabove, Imola Wible, Denise Adams, Jonnie Frederick**

## Celebrating 30 years at the center

By DENISE ADAMS  
FRC Director

The true heart of the Family Resource Center of Blair County lies in our partnership with the community, our workers' connections with the families, and our families' desire to succeed for themselves and their children.

We truly believe the acronym TEAM – together everyone achieves more. From community collaboration to administration to family development specialists to parents and children – we are a team.

# HEALTHY BLAIR COUNTY COALITION



The Healthy Blair County Coalition is a partnership of local individuals and organizations under the guidance of United Way, working to promote the social, economic, emotional, and physical well-being of area residents.

## **Vision**

A healthy Blair County community.

## **Mission**

To assess facets of a healthy Blair County by sharing resources, engaging local partnerships, and implementing strategies and programs to make a positive impact on the lives of the people in our community.

---

## Youth Drug & Alcohol Prevention

The United Way of the Southern Alleghenies is committed to providing youth drug and alcohol prevention programming in all school districts in both Cambria and Somerset Counties. In 2011, the UWSA Board of Directors made the decision to fund the growth and expansion of the nation's top prevention program, Botvin LifeSkills Training.

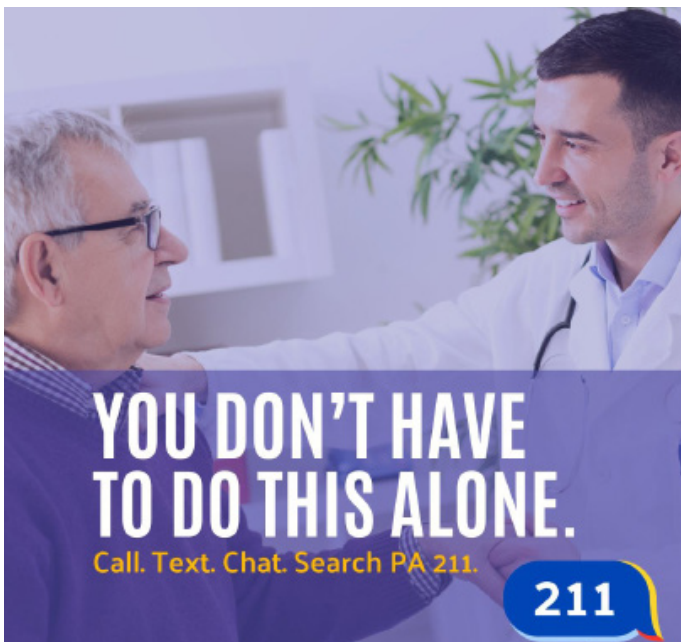
During the last 15 years, the work of the UWSA, along with many key community stakeholders, including each county's Single County Authority, Twin Lakes Center, Somerset Drug-Free Communities, the Pennsylvania Commission on Crime and Delinquency, University of Colorado, 10 school districts, and providers of Youth Drug & Alcohol Prevention programming, have made a significant impact within the region. Botvin is now being taught to 2,446 students each year.

---

## PA 211 Helpline

PA 211 is a non-emergency helpline dedicated to connecting individuals who are in need of health and human services with local information and resources that can help them during their time of need. PA 211 is available to all residents in Blair, Cambria, and Somerset Counties free of charge, and is available 24/7, 365 days a year. Last year, PA 211 received 6,258 total contacts from Blair, Cambria, and Somerset residents seeking help for health and human services related to:

- Utility Assistance
- Rent Assistance
- Medical Assistance
- Drug & Alcohol Support or Treatment
- Mortgage Assistance
- Employment Assistance
- Transportation Assistance
- Food Assistance



# GLASS SLIPPER PROJECT



## We cant' do this without volunteers!

The Glass Slipper Project was open this year to teens from Blair, Cambria, and Somerset Counties. UWSA again partnered with Night to Shine to provide adults with intellectual disabilities with formal wear for their annual event, which is a prom-like experience. The program provided 328 teens and ladies with dresses and accessories worth \$56,100.

**About Night to Shine** – Night to Shine, sponsored by the Tim Tebow Foundation, is an unforgettable prom night experience centered on God's love, for people with special needs, ages 14 and older. Participation is free to all prom-goers. UWSA again partnered with Night to Shine to provide formal wear.



# BASIC HUMAN NEEDS INITIATIVE

## Supporting Basic Human Needs

Our United Way invests in basic human needs by funding the work and programs of our dedicated Partner Agencies. These programs commonly provide the vital resources and assistance that most individuals use to avoid crisis situations.

Through the work, these Partner Agencies enable the United Way to reach and impact the lives of more than 79,200 individuals each year. Programs within this initiative area span across the following seven platforms:



**Hunger**

The United Way of the Southern Alleghenies is the lead administrator of the Pennsylvania Department of Agriculture Grant for Cambria County. During the course of the 2025-2026 grant funding cycle, \$253,100 was allocated to 20 local food pantries and meal centers via the PA Department of Agriculture grant, serving approximately 22,178 households requiring food assistance. The Somerset County Mobile Food Bank served 16,200 households in 2025.



**Homelessness**

Addressing the issue of homelessness in Blair, Cambria, and Somerset Counties is a priority area for our United Way. In Blair County, we invested \$37,000 in two homeless shelter programs. In Cambria County, \$25,000 was invested into a homeless prevention program; and in Somerset County, \$11,500 was invested into the county's homeless shelter program. Combined, these programs served 1,133 people in 2024.



**Mental Health**

Supporting Mental Health programs is important to sustaining the health and well-being of our community. In doing so, our United Way invested \$15,000 in funding to the Peer Empowerment Network, which annually sees more than 1,950 individuals within Cambria County.



**Emergency Utility Assistance**

We support the needs of many individuals through funding Emergency Utility Assistance programs in Blair, Cambria, and Somerset Counties. Catholic Charities receives \$23,375 annually to provide emergency financial assistance to individuals seeking vital support. In Somerset, \$3,500 is allocated to The Salvation Army – Somerset to provide heating assistance to families.



**Medical Assistance**

The work of Highlands Health is an important asset for providing much-needed healthcare in Cambria and Somerset Counties. In 2025-26, Highlands Health received \$32,500 to provide medical assistance to 783 individuals in our two-county region.



**Direct Victims of Crime and Domestic Abuse**

Addressing direct victims of crime and domestic abuse within our community is a focus at United Way. We are very grateful to have two Partner Agencies that continue to make a positive impact each year. Victim Services, Inc. received \$50,000 and Family Services, Inc., serving Blair County, received \$12,500. Both programs provide direct support to individuals escaping domestic violence or abuse.

# SNAP AT THE MARKET



Supplemental  
Nutrition  
Assistance  
Program

## AT THE MARKET

We had a banner year at the  
Johnstown Farmers Market.

8 Participating Vendors  
\$7,443 SNAP Benefits Redeemed  
\$6,095 Fresh Bucks Awarded  
\$435 Veteran's Vouchers Redeemed  
An Average of 98 Members of Households  
Benefitting Weekly



**UNITED WAY**  
of the Southern  
Alleghenies

**United is the Way to Food Security**

The United Way of the Southern Alleghenies, in partnership with the Center for Population Health, and the City of Johnstown, developed the SNAP at the Market program to improve food security in the downtown. Each week, SNAP users can visit the token table at the Downtown Johnstown Farmers Market, where United Way team members and volunteers swipe their EBT cards in exchange for tokens to spend with participating farmers, bakers, and makers.

Since the program began in August 2022, more than \$40,000 in revenue has been generated for local vendors. Plus, the token table features recipes, community resources, and more such as activities to engage our youngest eaters. We've provided a farmer's market playhouse for young children as well as children's books focused on healthy eating.



# REVENUE & EXPENSES 2023-24 FISCAL YEAR

United Way adheres to best practices in non-profit management, applying consistent, effective, internal controls and strong governance to ensure accountability and transparency. Revenue and expense information reflects audited totals from the Fiscal Year - July 1, 2023 to June 30, 2024.

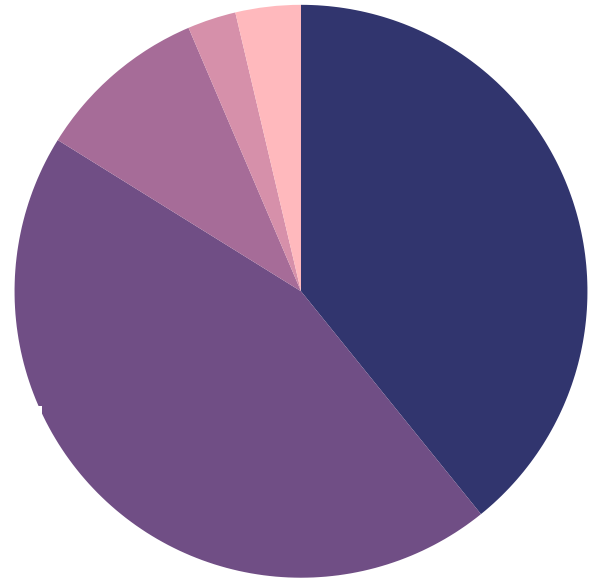
Top ratings for efficiency and transparency



## Revenues:

- 36% Donor Contribution (Community Impact)
- 47% Grant Revenue
- 10% Investment & Other Incomes
- 4% Fundraising & Other Revenue
- 3% Donor Designated Contributions

Note: Percentages are rounded.

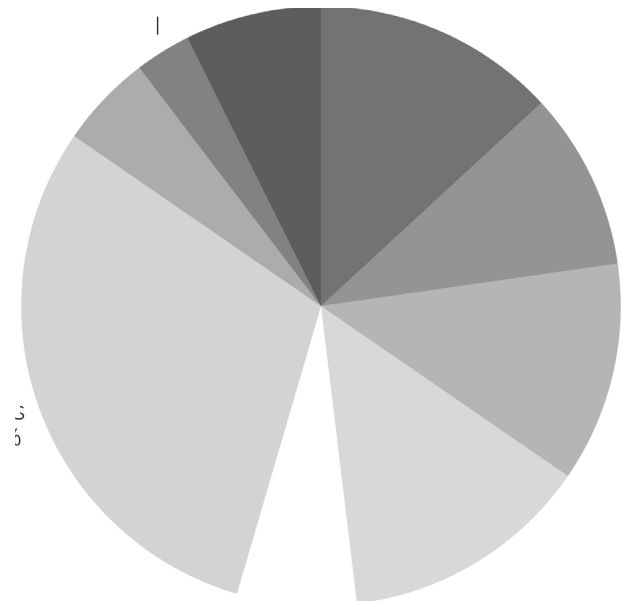


**\$1,594,234**

## Expenses:

- 30% Grants
- 13% Fundraising Campaign
- 13% Helping Children & Youth Succeed
- 12% Food Pantries
- 10% Supporting Vulnerable & Aging Population & Promoting Health & Wellness
- 5% Management and General
- 7% Community Outreach Services
- 3% Community Impact
- 7% Strengthening & Supporting Families & Promoting Self-Sufficiency

Note: Percentages are rounded.



**\$2,269,881**

# PA DEPARTMENT OF AGRICULTURE GRANT FUNDING DISTRIBUTION

<b>Food Pantries</b>	<b>2023-2024 Funding</b>
St. Bernard Food Pantry:	\$21,076
Cresson Food Pantry:	\$5,612
Dorothy Day Center:	\$11,700
Ebensburg SVDP Food Pantry:	\$11,359
Forest Hills Emergency Food Pantry:	\$6,976
Franklin Street United Methodist Church Pantry:	\$13,524
Good Samaritan Food Pantry:	\$8,120
Gr. Johnstown Christian Fellowship Pantry:	\$6,019
Interfaith Food Pantry:	\$21,317
Moxham Food Pantry:	\$26,487
Patton Food Pantry:	\$21,858
Portage Area Food Pantry:	\$9,471
South Fork Food Pantry:	\$7,122
St. Andrew's Food Pantry:	\$5,779
St. Clement's Food Pantry:	\$7,248
Walnut Grove Emergency Food Bank:	\$6,172
West End Food Pantry:	\$9,770
<b>Served Meals</b>	
Family Kitchen:	\$18,258
Salvation Army:	\$5,920
<b>Total:</b>	<b>\$223,778</b>



# 2026-2027 COMMUNITY IMPACT INVESTMENTS

## Community Impact Investments

Community Impact Investments are the funds that each agency receives based upon the work of the Community Impact Committee. Allocation amounts are determined based upon agency site visits conducted in March, followed by volunteer evaluations of the programs in April. The table below illustrates how funding raised through the prior campaign, as well as grant procurement, makes an impact in Blair, Cambria, and Somerset Counties.

### Partners & Projects

#### AGENCY - PROGRAM - ALLOCATION

United Way of the Southern Alleghenies - Community Impact, Outreach, Early Childhood Initiative, Family Resource Center, and Emergency Food and Shelter: \$175,424	The Learning Lamp - Pre-school Scholarships: \$10,000
Family Center/Tableland - Parents as Teachers: \$89,000	Girl Scouts: \$10,000
Beginnings, Inc. - Parents as Teachers: \$85,000	Johnstown YMCA - Safe Places/Strong Roots: \$10,000
Victim Services - Direct Services: \$50,000	Gloria Gates Memorial Foundation - Afterschool Program: \$9,000
Highland Health - Free Medical Clinic: \$32,500	YMCA Blair: \$8,000
The Learning Lamp - Early Childhood Behavioral Intervention & Support: \$30,000	VisAbility - Children's Vision Screenings: \$7,500
Small Town Hope - Pre-school: \$26,000	Big Brothers Big Sisters - Mentoring Program: \$5,500
Women's Help Center: \$25,000	Somerset Mobile Food Bank - Food Distribution: \$5,434
Catholic Charities - Emergency Financial Assistance: \$23,375	Victim Services - Grief Program: \$5,000
Flood City Youth Academy: \$20,000	Salvation Army Somerset - Heating Assistance: \$3,500
Family Services: - Teen Shelter: \$18,500	UWSA Glass Slipper Project: \$3,025
Family Services - Family Shelter: \$18,500	UWSA Safety Net: \$2,500
PA 2-1-1: \$15,225	VisAbility - Children's Glasses & Devices: \$2,000
Peer Empowerment - Drop-In Center Cambria: \$15,000	Salvation Army Johnstown - Designated Funds: \$1,169
Home Nursing Agency - Nurse Family Partnership: \$14,000	Home Nursing Agency Foundation - Healing Patch: \$1,000
Family Services Inc. - Victim Services, Blair: \$12,500	Center for Community - Designated Funds: \$456
Next Step Center - Homeless Shelter: \$11,500	*Twin Lakes Center - Botvin Lifeskills: \$30,000
	*UWSA Diaper Bank: \$77,000
	*Funded by grants secured by UWSA.
	<b>Total: \$822,608</b>



# WOMEN UNITED & POWER OF THE PURSE



The Women United® of the United Way of the Southern Alleghenies supports the core initiative areas of Early Childhood Development and Parental Engagement. Our core mission is to help educate, engage, and empower families to excel. Our women's affinity group promotes community leadership, interaction, communication, and provides fundraising support for the programs and services aligned with our initiative goals.

What does it mean to be a member of WOMEN UNITED®?

WOMEN UNITED® is a global network of more than 55,000 women in 165 communities across the U.S. and six countries, all dedicated to improving lives and creating stronger communities. Since its inception in 2002, WOMEN UNITED® has raised more than \$2 billion to drive real and lasting change. The contributions of these women leaders go well beyond financial donations: they get involved, shake things up, and make a measurable difference in their own backyard and around the world.

We invite you to be part of the solution. Learn more about how you can become involved and connect with interesting, dynamic women who are making a difference. For more information, please contact Karen Struble Myers by email at [Karen@unitedwaysa.org](mailto:Karen@unitedwaysa.org), or by phone at 814-535-2563.



## More than \$62,000 raised at Power of the Purse

Women United of the Southern Alleghenies hosted the annual fundraiser at 1st Summit Arena for the third consecutive year in 2025. United Way's top fundraising event has grown significantly, raising more than \$350,000 in support of the United Way's top two core initiative areas, Parents as Teachers and Nurse-Family Partnership, since 2017.

There were more than 700 women in attendance the last four years, raising a record amount of money, and more than 20,000 diapers for the UWSA's growing diaper bank. This event also supports Toasty Toddler in Blair County, run by United Way's Family Resource Center.

The next Power of the Purse is scheduled for Sept. 3, 2026, at the 1st Summit Arena @ Cambria County War

# ENDOWMENT & PLANNED GIVING

The United Way of the Southern Alleghenies' Endowment and Planned Giving fund is a vessel for individuals determined to make a lasting impact on the communities of Blair, Cambria, and Somerset Counties. The fund has been built on a variety of gifts from long-time supporters of the United Way.

**\$877,126** →



**United Way of the  
Southern Alleghenies**  
Endowment & Planned Giving

## 1889 Foundation Investment

The United Way of the Southern Alleghenies is especially appreciative for a strong partnership with the 1889 Foundation. In 2023, the 1889 Foundation provided \$500,000 to advance UWSA's social change initiatives in Cambria and Somerset Counties. These funds were invested in 2024 across Partner Agency programs to scale innovative approaches to solving some of the most challenging problems.



Together, we collaborate to improve community health, enhance food security, advance early learning initiatives, and create sustainable strategies for the well-being of our region.

As a regional leader, the 1889 Foundation's spirit of giving helped UWSA improve the well-being of more than 92,000 residents this past year.



# BOARD OF DIRECTORS

**Board Chair** - Jessica Fisher, Associate - McQuaide Blasko

**Board Vice Chair** - John Augustine, Administrative Director - Greater Johnstown Career & Technology Center

Board Members: (in alphabetical descending order)

**John Augustine**

Administrative Director - Greater Johnstown Career & Technology Center

**Denise Barndt**

Community Advocate

**Elizabeth Bittner-Pilot**

RN Acute Care Coordinator - UPMC Somerset

**Diane Chesnutwood**

Human Resources Manager - NCDMM (National Center for Defense Manufacturing and Machining)

**Zachary Craig**

Managing Director - Capital Wealth Advisors

**Tina Dallape**

Assistant Vice President and Relationship Advisor - First National Bank Wealth Management

**Rev. Matthew Deal**

St. Paul's United Church of Christ, Somerset

**Dr. Elizabeth Dunmore**

Chief Medical Officer - Conemaugh Memorial Medical Center

**Marcus Edwards**

SBA Administrator - Altoona Blair County Development Corporation

**Kalyn Everett**

Assistant Vice President, Trust Compliance Officer  
AmeriServ Wealth and Capital Management

**Jessica L. Fisher, Esq., UWSA Board Vice Chair**

Associate - McQuaide Blasko

**Terry Glunt**

Commercial Lender - CNB Bank

**Donna Gority**

Former Commissioner - Blair County

**Lindsey Hilbrecht**

Human Resources Manager - North American Hoganas

**Dennis Hutchison**

President - Somerset County Farm Bureau

**Judith J. Kimberlin**

Community Advocate

**Natalie Kurchak**

Community Advocate

**Sue Mann**

President - 1889 Foundation

**Susan Martin**

Vice President and Senior Regional Business Relationship Manager - 1st Summit Bank

**Jonathan O'Harrow**

Strategic Communications Director - Penn State Altoona

**Sharon L. Paterson**

Concurrent Technologies Corporation

**Tracy Selak**

Administrator - Cambria County Health Choices

**Sherri Stayer**

Community Outreach Coordinator - Lung Disease Foundation of Central Pennsylvania

**Dr. Jerry Zahorchak, Board Chair**

Community Advocate



**UNITED WAY**  
of the Southern  
Alleghenies

# A MESSAGE FROM LEADERSHIP

More than 95 years ago, United Way of the Southern Alleghenies made a bold promise to unite people and resources for the collective well-being of our region – not simply by providing charity, but by creating a coordinated, community-wide effort to confront society’s most pressing challenges.

Being bold means stepping forward when needs grow, convening partners across sectors, and investing in long-term solutions that strengthen families and communities. It means addressing not only immediate crises like food insecurity, but also the underlying issues that keep households struggling year after year. We understand that lasting impact requires persistence, collaboration, innovation, and the trust of the communities we serve.



**Karen Struble**



**Jessica Fisher**

For generations, United Way has remained a steady presence through economic downturns, natural disasters, and periods of uncertainty because our mission is built for the long haul. Born during the Great Depression, we are no stranger to hardship. Our history reminds us that communities are strongest when neighbors help neighbors and people unite around a common purpose. That spirit continues to guide our work today.

At our core, we believe the greatest strength of any community is its people. Time and again, we have seen what is possible when businesses support local families, volunteers give their time, organizations collaborate around shared goals, and individuals step forward to care for one another. That collective spirit is what allows United Way to continue meeting challenges head-on and building a stronger future for everyone.

Today, that same bold promise continues through UWSA’s work across Blair, Cambria, and Somerset Counties. By focusing on measurable outcomes, collective action, sustainable investment, and community-driven solutions, we continue our long-standing commitment to creating positive social change and improving lives throughout the region.

As the old proverb reminds us, “A society grows great when old men plant trees in whose shade they shall never sit.” Each of us shares a responsibility for intergenerational stewardship. Our communities thrive when people invest their time, resources, and energy into long-term legacies – education, family stability, health, and opportunity – even if they may never personally see the full rewards of those efforts.

That adage also brings us face to face with the 14 founders who came together in 1930s Johnstown to strengthen the spirit of human helpfulness during one of the most difficult periods in American history. Their courage, compassion, and resolve laid the foundation for the organization we are today: resilient, collaborative, compassionate, and community-minded.

Remember to be good to each other. Plant trees.

In gratitude,

Karen Struble  
President & CEO

Jessica Fisher  
Board President

A handwritten signature in cursive script that reads "Karen Struble".

A handwritten signature in cursive script that reads "J. Fisher".



# Our Team



## Staff & Office Information

**Karen Struble**  
President & CEO

**Paula Gojmerac**  
Community Impact Manager &  
Officer Manager

**Mickie Cooper**  
Accountant

**Rick Kazmer**  
Community Relationship &  
Marketing Manager

**Imani Vaughn**  
Blair County Community Outreach  
Coordinator

**Lauren Lazzari**  
Early Childhood Systems Coordinator

**Amanda Ward**  
Administrative Coordinator



Main Office: 422 Main Street,  
Suite 203, Johnstown, PA 15901  
Phone: 814-535-2563

Blair County Office: 208  
Hollidaysburg Plaza,  
Duncansville, PA 16635  
Phone: 814-317-5108

Somerset Office (appointment  
only): 109 E. Main Street,  
Somerset, PA 15501  
Phone: 814-531-0003

## Family Resource Center of Blair County

**Denise Adams**  
Director

**Jonnie Frederick**  
Family Development Specialist

**Imola Wible**  
Family Development Specialist

**Julie A. Colabove**  
Family Development Specialist

# UNITED IS THE WAY

